

**PLANET行星®**

ISO9001 CERTIFICATION

行星传动 驱动未来

PLANETARY TRANSMISSION, DRIVING THE FUTURE

## AGV驱动减速机 AGV DRIVE REDUCER

定制各类非标AGV减速机

Customized AGV reducer is also available



**PLANET行星®**

**杭州行星传动设备有限公司**

地址: 杭州萧山机器人小镇鸿兴路477号

电话: 0571-8216 3633 8216 3722

传真: 0571-8216 3655

邮箱: sales@cnplanetary.com

网址: www.cnplanetary.com



**HANGZHOU PLANETARY TRANSMISSION EQUIPMENT CO.,LTD.**

Add: No.477, Hongxing Road, Robot Town,  
Xiaoshan District, Hangzhou City

Tel: 86-571-8216 3633 8216 3722

Fax: 86-571-8216 3655

E-mail: sales@cnplanetary.com

http: //www.cnplanetary.com

2023/10-2000

**PLANET行星®**

**愿景：持续为客户创造价值**

VISION: CONTINUE TO CREATE VALUE FOR CUSTOMERS.

**使命：精密制造、创新驱动、绿色发展**

MISSION: PRECISION MANUFACTURING,  
INNOVATION DRIVEN, GREEN DEVELOPMENT.

**价值观：专业、创新、激情、快乐**

SENSE OF WORTH: PROFESSION, INNOVATION,  
PASSION AND ENJOYING.



## **PLANETARY TRANSMISSION, DRIVING THE FUTURE**

### **行星传动 驱动未来**

杭州行星传动设备有限公司位于杭州萧山机器人小镇，毗邻杭州萧山国际机场是一家集研发、制造和销售精密行星减速机、AGV专用精密减速机为主的国家高新技术企业，“行星”和“PLANET”牌减速机广泛应用于移动机器人、物流分拣、太阳能光伏、半导体设备和新材料等领域。

公司以推动精密传动机械的发展为己任，致力于工业自动化和智能化领域精密传动机械的研发和制造。

Hangzhou Planetary Transmission Equipment CO., Ltd., located in Hangzhou Xiaoshan Robot Town, near to Hangzhou Xiaoshan International Airport, is a scientific and technological enterprise which is professional in R&D, manufacturing, and sales for high precision planetary reducer, AGV precision reducer, etc. Which is also a National High-Tech enterprise. Main products marked "PLANET" brand high precision planetary reducer are widely used for mobile robot, sorting robot, service robot, solar photovoltaic equipment, semiconductor equipment and new material field, etc.

We base the "promote the development of precision transmission machinery" as our responsibility, we apply ourselves to industrial automation and intelligent field of precision transmission machinery R&D and manufacturing.

## 直角型AGV驱动减速机 Right angle reducer for AGV drive

### 驱动减速机特点 Drive reducer's character:

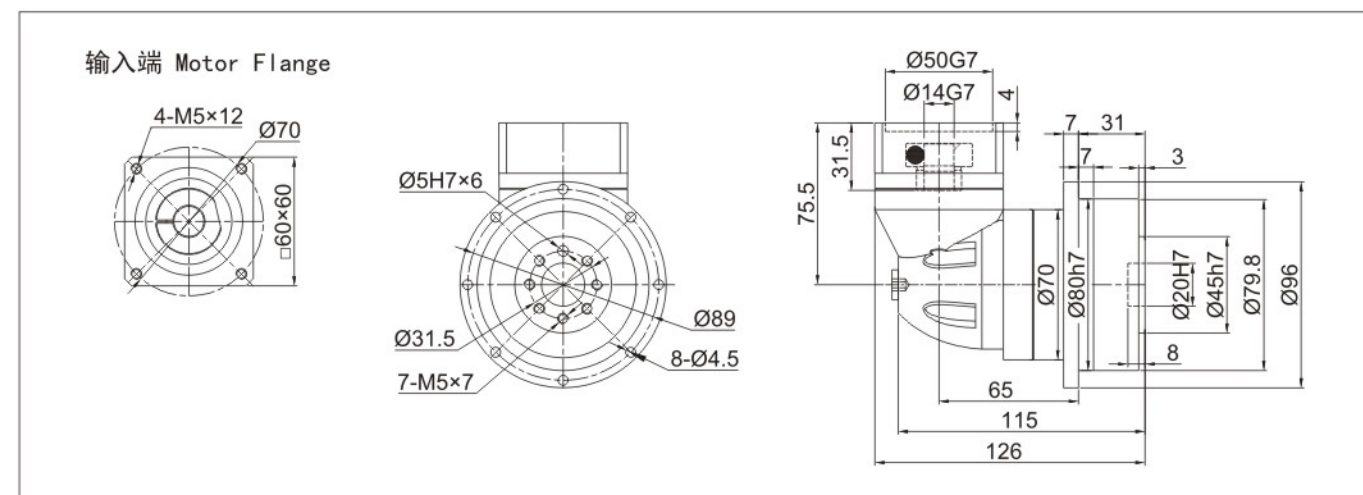
- ◆ 法兰输出 Output flange rotate
- ◆ 大径向负载 High radial load
- ◆ 低噪音 Low noise
- ◆ 短轴向长度 Axial direction short
- ◆ 终身免维护 Maintenance free



### WPD70性能参数表 Performance parameter table

减速比(Ratio i)	20	防护等级 (Protection grade)	IP54
寿命(Service life) ≥	20000h	回程间隙(Return clearance) ≤	20arcmin
额定扭矩(Rated torque)	40N.M	急停扭矩 (Emergency stop torque)	80N.M
最大径向力(Max. radial load)	1900N	最大轴向力(Max. axial load)	800N
噪音 (Noise) ≤	65dB(1m)	推荐输入转速(Nominal input rpm)	3000rpm

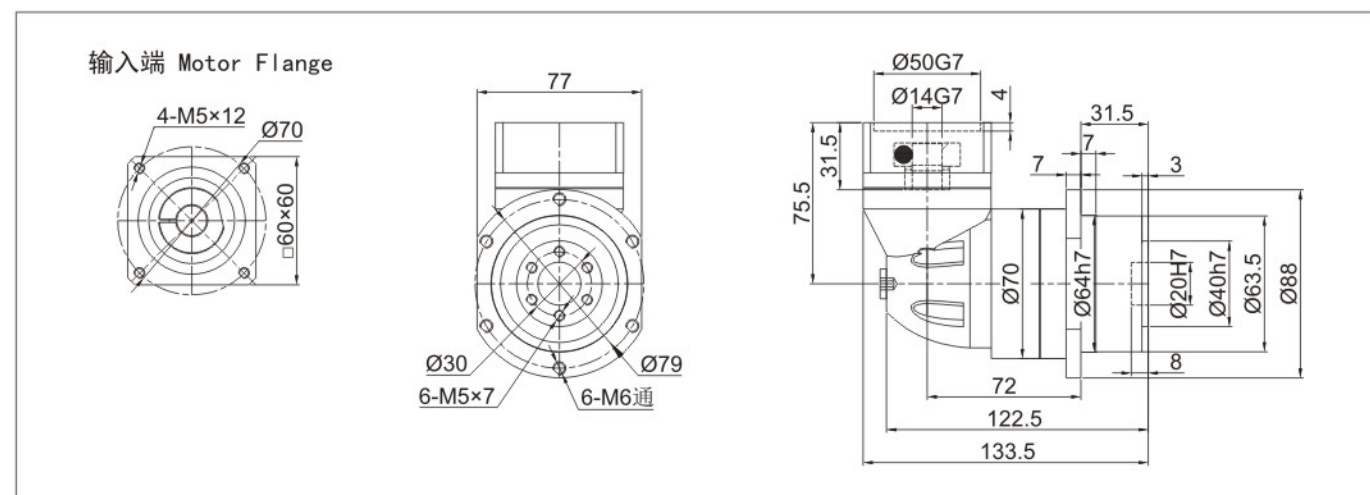
### WPD70外形尺寸图 Outline dimensions



### WPD64性能参数表 Performance parameter table

减速比(Ratio i)	20	防护等级 (Protection grade)	IP54
寿命(Service life) ≥	20000h	回程间隙(Return clearance) ≤	15arcmin
额定扭矩(Rated torque)	28N.M	急停扭矩 (Emergency stop torque)	56N.M
最大径向力(Max. radial load)	3200N	最大轴向力(Max. axial load)	2500N
噪音 (Noise) ≤	65dB(1m)	推荐输入转速(Nominal input rpm)	3000rpm

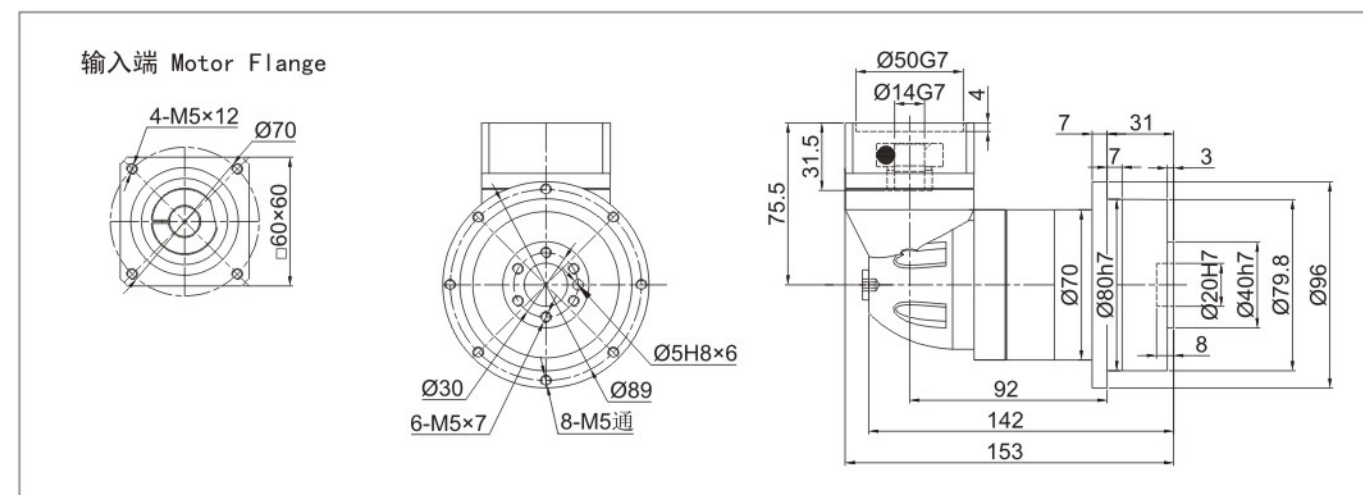
### WPD64外形尺寸图 Outline Dimensions



### WPBD70性能参数表 Performance parameter table

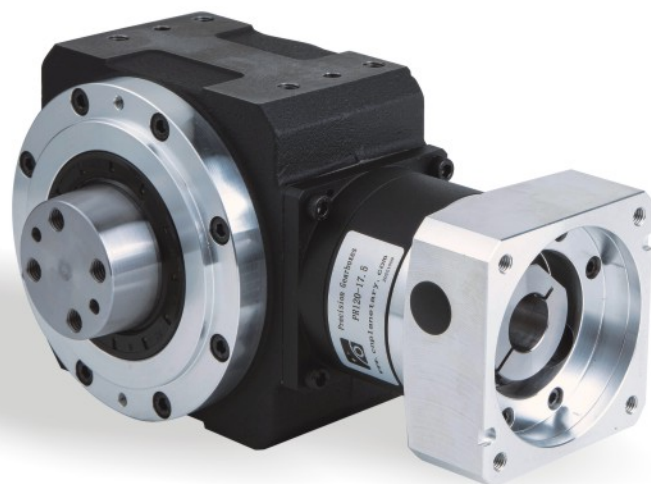
减速比(Ratio i)	40	防护等级 (Protection grade)	IP54
寿命(Service life) ≥	20000h	回程间隙(Return clearance) ≤	20arcmin
额定扭矩(Rated torque)	50N.M	急停扭矩 (Emergency stop torque)	100N.M
最大径向力(Max. radial load)	2500N	最大轴向力(Max. axial load)	800N
噪音 (Noise) ≤	70dB(1m)	推荐输入转速(Nominal input rpm)	3000rpm

### WPBD70外形尺寸图 Outline dimensions



### 驱动减速机特点 Drive reducer's character:

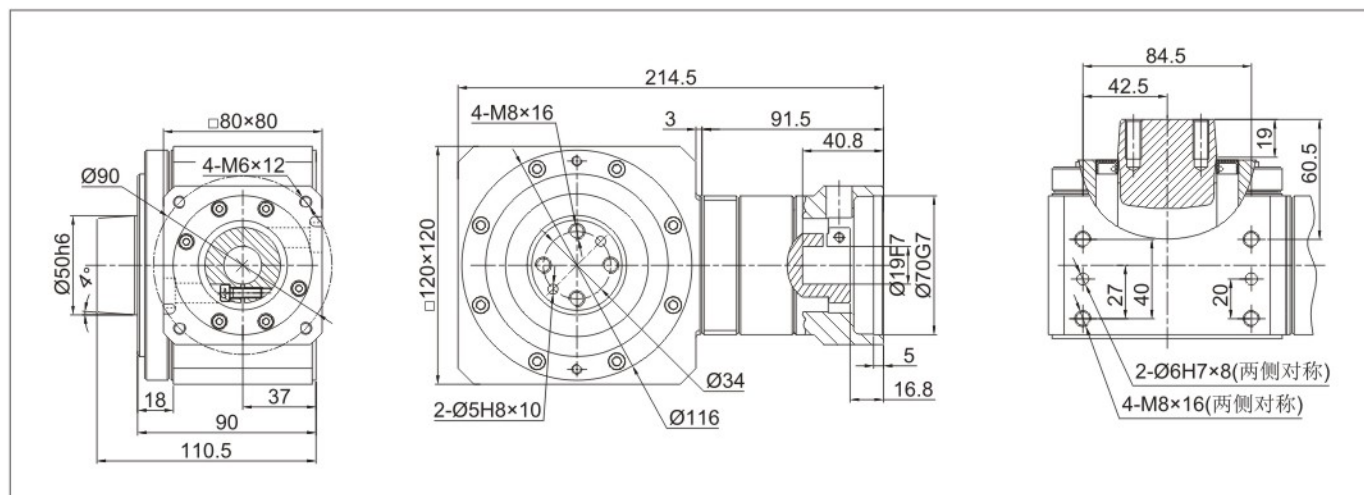
- ◆ 锥度轴输出 Tapered output shaft
- ◆ 大径向负载 High radial load
- ◆ 低噪音 Low noise
- ◆ 短轴向长度 Axial direction short
- ◆ 终身免维护 Maintenance free



PR120性能参数表 Performance parameter table

减速比(Ratio i)	17.5	防护等级 (Protection grade)	IP54
寿命(Service life) ≥	20000h	回程间隙(Return clearance) ≤	35arcmin
额定扭矩(Rated torque)	90N.M	急停扭矩 (Emergency stop torque)	180N.M
最大径向力(Max. radial load)	7000N	最大轴向力(Max. axial load)	4000N
噪音 (Noise) ≤	65dB(1m)	推荐输入转速(Nominal input rpm)	3000rpm

PR120外形尺寸图 Outline dimensions



### AGV驱动减速机(外转子系列) AGV drive reducer (Ring rotation series)

### 驱动减速机特点 Drive reducer's character:

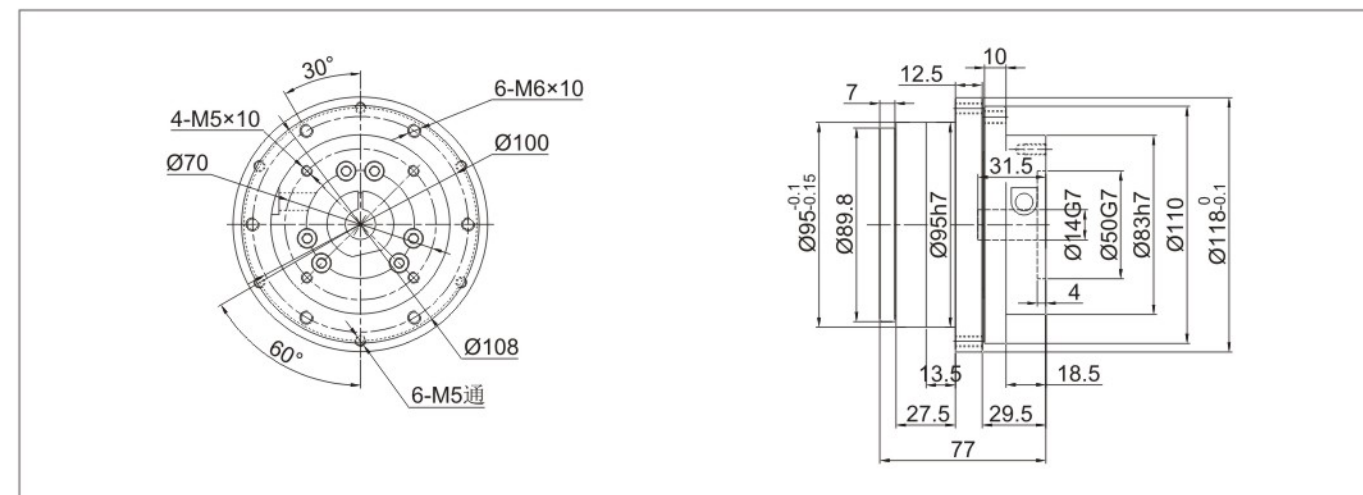
- ◆ 外圈输出 Ring rotate output
- ◆ 极大径向负载 Extra high radial load
- ◆ 低噪音 Low noise
- ◆ 极短轴向长度 Axial direction extra short
- ◆ 终身免维护 Maintenance free



PGV95性能参数表 Performance parameter table

减速比(Ratio i)	15	防护等级 (Protection grade)	IP54
寿命(Service life) ≥	20000h	回程间隙(Return clearance) ≤	20arcmin
额定扭矩(Rated torque)	60N.M	急停扭矩 (Emergency stop torque)	120N.M
最大径向力(Max. radial load)	3000N	最大轴向力(Max. axial load)	600N
噪音 (Noise) ≤	63dB(1m)	推荐输入转速(Nominal input rpm)	3000rpm

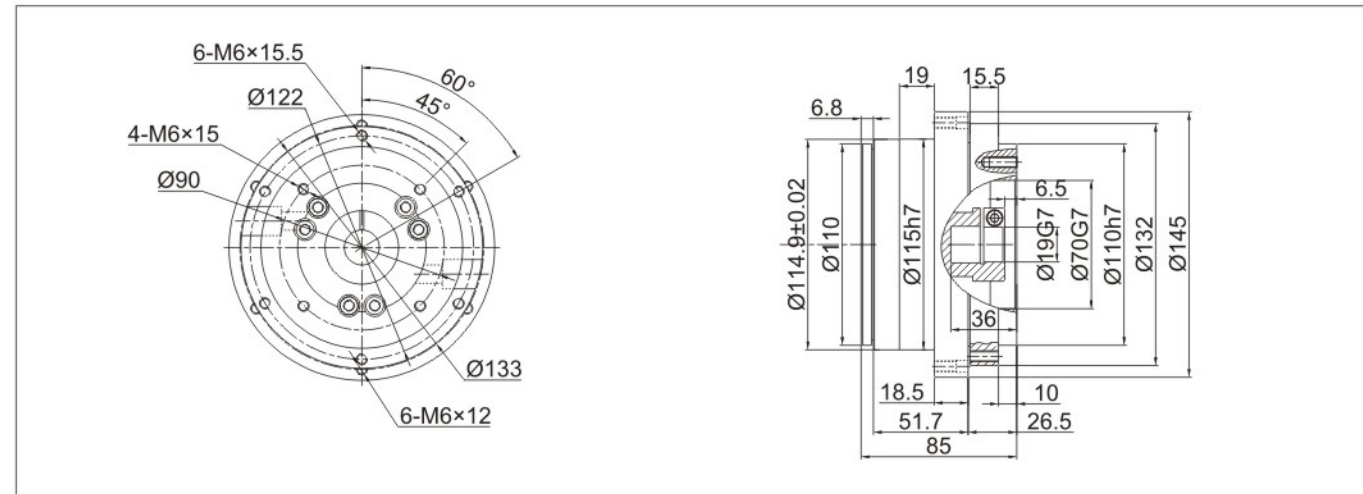
PGV95外形尺寸图 Outline DIMENSIONS



PGV115性能参数表 Performance parameter table

减速比(Ratio i)	15, 21	防护等级 (Protection grade)	IP54
寿命(Service life) ≥	20000h	回程间隙(Return clearance) ≤	20arcmin
额定扭矩(Rated torque)	140N.M	急停扭矩 (Emergency stop torque)	280N.M
最大径向力(Max. radial load)	8140N	最大轴向力(Max. axial load)	4660N
噪音 (Noise) ≤	63dB(1m)	推荐输入转速(Nominal input rpm)	3000rpm

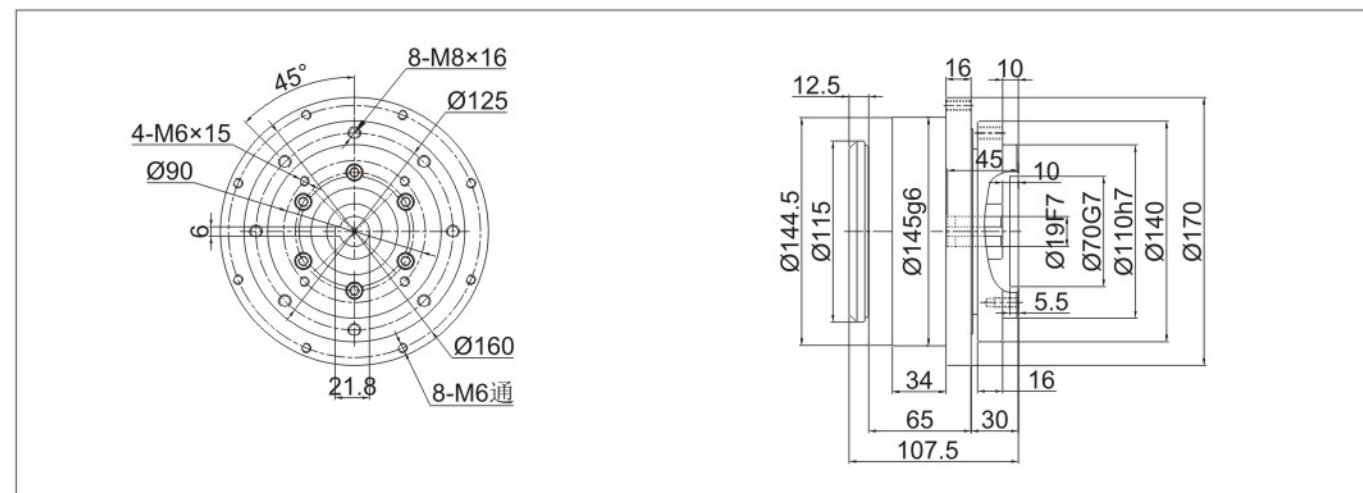
PGV115外形尺寸图 Outline dimensions



PGV145性能参数表 Performance parameter table

减速比(Ratio i)	40	防护等级 (Protection grade)	IP54
寿命(Service life) ≥	20000h	回程间隙(Return clearance) ≤	20arcmin
额定扭矩(Rated torque)	220N.M	急停扭矩 (Emergency stop torque)	440N.M
最大径向力(Max. radial load)	12740N	最大轴向力(Max. axial load)	7300N
噪音 (Noise) ≤	65dB(1m)	推荐输入转速(Nominal input rpm)	3000rpm

PGV145外形尺寸图 Outline dimensions



## AGV顶升减速机 AGV lifting reducer

### 顶升减速机特点 Lifting reducer's character:

- ◆ 输入输出垂直 Output and input right angle
- ◆ 极大轴向负载 Extra high axial load
- ◆ 低噪音 Low noise
- ◆ 终身免维护 Maintenance free

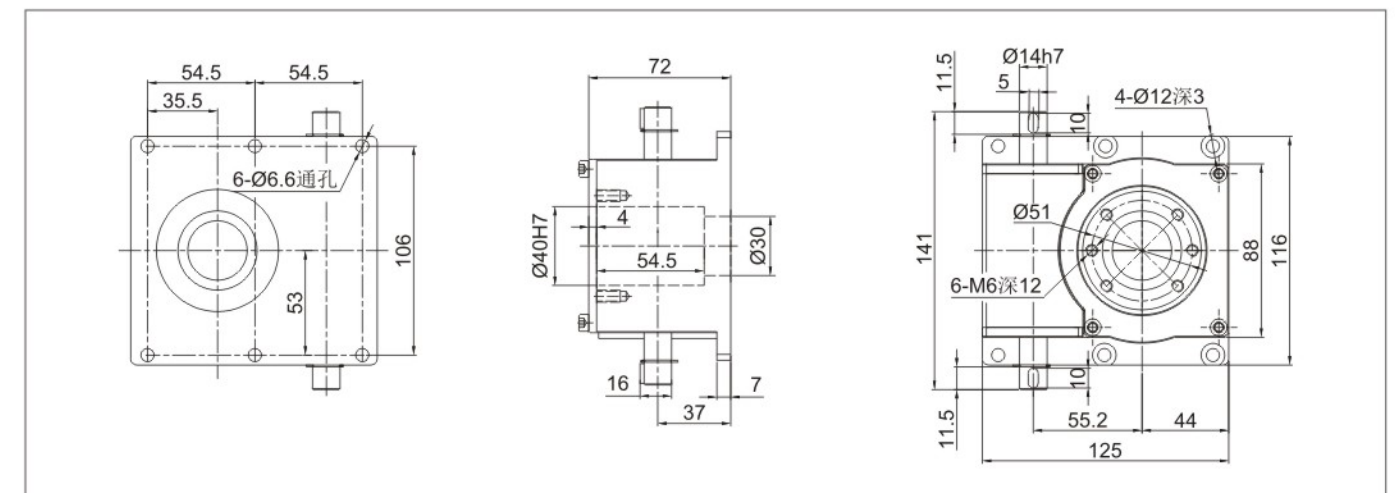


## DS55直角型顶升减速机 DS55 right angle reducer for AGV lifting

DS55性能参数表 Performance parameter table

减速比(Ratio i)	2	防护等级 (Protection grade)	IP54
寿命(Service life) ≥	4000h	回程间隙(Return clearance) ≤	/
额定扭矩(Rated torque)	30N.M	额定轴向力 (Rated axial load)	5000N
噪音 (Noise) ≤	68dB(1m)	推荐输入转速(Nominal input rpm)	1000rpm

DS55外形尺寸图 Outline dimensions



### HAB90曲柄连杆型顶升减速机 HAB90 crank connecting rod type lifting reducer

#### 减速机特点 Reducer's character:

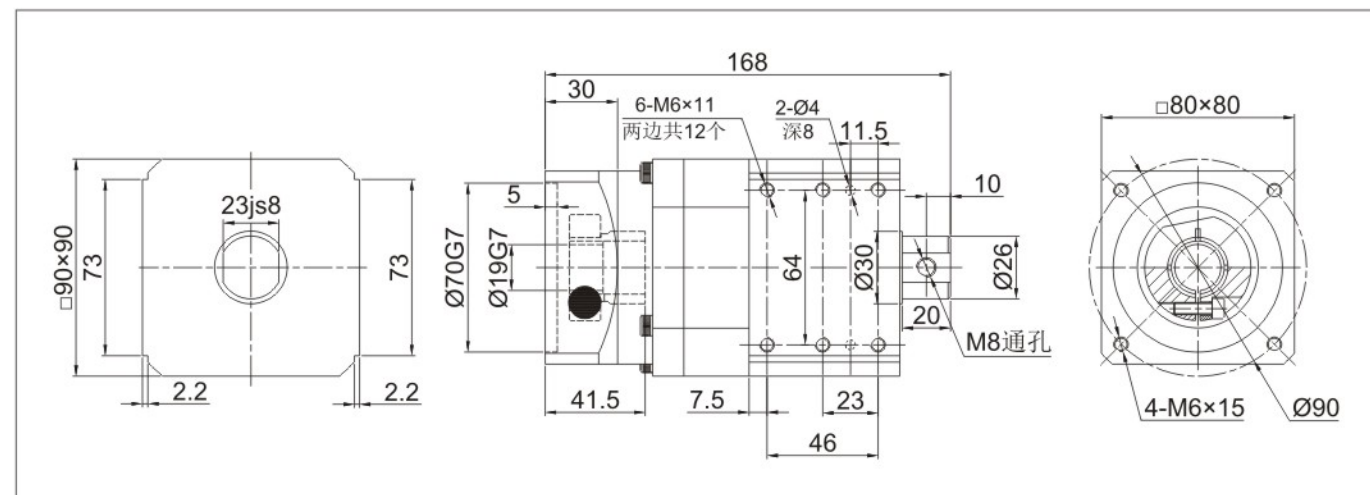
- ◆ 轴输出 Shaft output
- ◆ 极大径向负载 Extra high radial load
- ◆ 低噪音 Low noise
- ◆ 终身免维护 Maintenance free



#### HAB90性能参数表 Performance parameter table

减速比(Ratio i)	100	防护等级 (Protection grade)	IP65
寿命(Service life) ≥	4100h	回程间隙(Return clearance) ≤	15arcmin
额定扭矩(Rated torque)	72N.M	急停扭矩 (Emergency stop torque)	177N.M
最大径向力(Max. radial load)	5000N	最大轴向力(Max. axial load)	1000N
噪音 (Noise) ≤	65dB(1m)	推荐输入转速(Nominal input rpm)	3000rpm

#### HAB90外形尺寸图 Outline dimensions



### PD系列驱动减速机特点 Drive reducer's character:

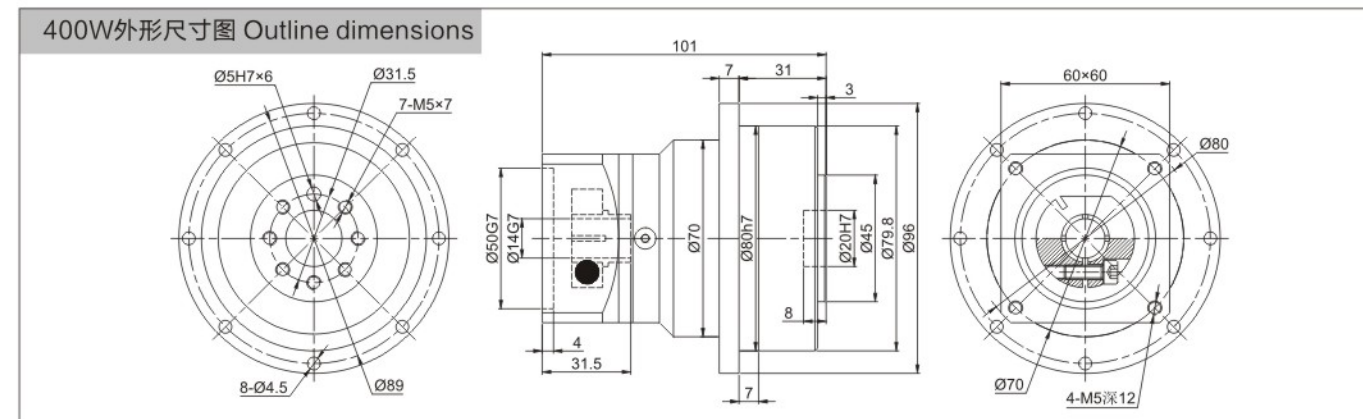
- ◆ 法兰输出 Output flange rotate
- ◆ 大径向负载 High radial load
- ◆ 低噪音 Low noise
- ◆ 短轴向长度 Axial direction short
- ◆ 终身免维护 Maintenance free



#### PD70系列性能参数表 PD70 series performance parameter table

额定输入转速	3000rpm	额定径向力	1900N	速比	额定扭矩	速比	额定扭矩
额定寿命	20000h	额定轴向力	800N	9	30Nm	20	44Nm
满载效率	94%	噪声	58dB(A)	12	30Nm	25	40Nm
防护等级	IP54	使用温度	-25℃ ~ +90℃	15	30Nm	32	44Nm
安装方式	任意	润滑方式	长效润滑	16	44Nm	40	40Nm

#### PD70系列外形尺寸图 PD70 outline dimensions



#### PD90系列性能参数表 PD90 series performance parameter table

额定输入转速	3000rpm	额定径向力	3200N	速比	额定扭矩	速比	额定扭矩
额定寿命	20000h	额定轴向力	1400N	9	70Nm	20	110Nm
满载效率	94%	噪声	60dB(A)	12	70Nm	25	105Nm
防护等级	IP54	使用温度	-25℃ ~ +90℃	15	70Nm	32	110Nm
安装方式	任意	润滑方式	长效润滑	16	110Nm	40	105Nm

#### PD90系列外形尺寸图 PD90 outline dimensions

